

RS - ROLLER SHUTTER
 UA - UNLOADING AREA
 FH - FIRE HYDRANT
 FHR - FIRE HOSE REEL

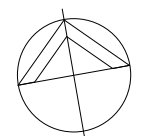
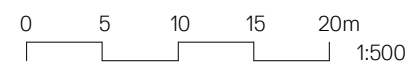
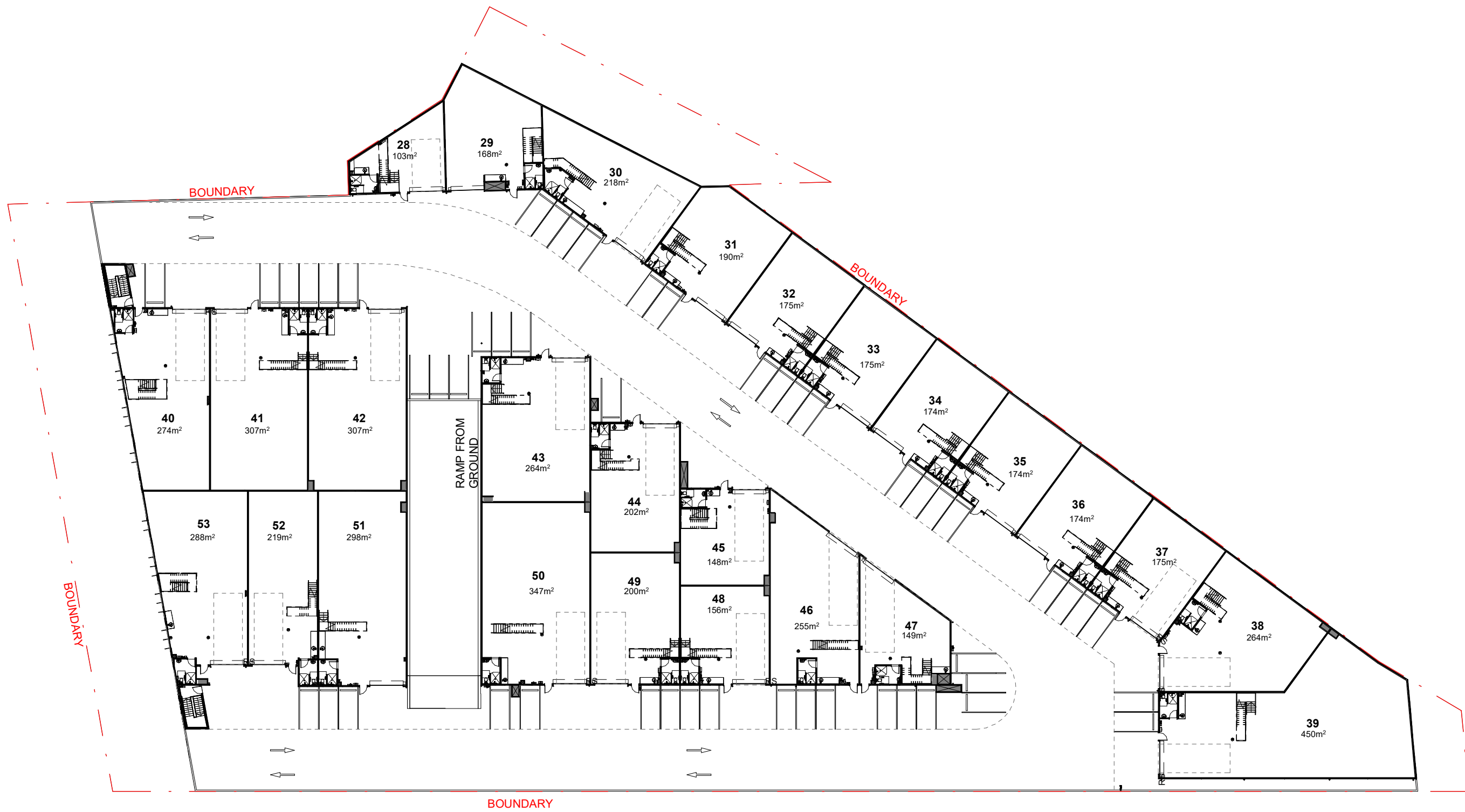


LEVEL		AREA	
GROUND FLOOR	OFFICE		956m ²
	WAREHOUSE		5,066m ²
	TOTAL		6,022m²



Disclaimer: Whilst all information contained in this marketing material are provided with care and in good faith, Level 33 make no representation or warranty as to the accuracy, reliability or completeness of the information. They do not form part of or constitute an offer or contract. All dimensions, layout, design features, furnishings, views, areas, images and artist's impressions are for presentation purposes and indicative only. The information may be subject to change at any time in accordance with the contract of sale. Prospective purchasers must rely upon the contents of any contract of sale, formal disclosure statements and their own research and enquiries in relation to any property to be purchased. Level 33 and its related entities accept no liability for any claim, loss or damage of any nature suffered by any person or corporation who relies on or seeks to rely on any information, advice or opinion expressed in this marketing material. No third party supplier or their agents has any authority to make or give any representations or warranty in relation to this property. Areas stated are as measured on the 2/08/22. Final areas are subject to finalisation of documentation, finalisation of construction and final strata survey.

centricbusinesspark.com.au



RS - ROLLER SHUTTER
 UA - UNLOADING AREA
 FH - FIRE HYDRANT
 FHR - FIRE HOSE REEL



LEVEL		LEVEL 1	AREA
OFFICE			904m ²
WAREHOUSE			4,960m ²
TOTAL			5,864m²



Disclaimer: Whilst all information contained in this marketing material are provided with care and in good faith, Level 33 make no representation or warranty as to the accuracy, reliability or completeness of the information. They do not form part of or constitute an offer or contract. All dimensions, layout, design features, furnishings, views, areas, images and artist's impressions are for presentation purposes and indicative only. The information may be subject to change at any time in accordance with the contract of sale. Prospective purchasers must rely upon the contents of any contract of sale, formal disclosure statements and their own research and enquiries in relation to any property to be purchased. Level 33 and its related entities accept no liability for any claim, loss or damage of any nature suffered by any person or corporation who relies on or seeks to rely on any information, advice or opinion expressed in this marketing material. No third party supplier or their agents has any authority to make or give any representations or warranty in relation to this property. Areas stated are as measured on the 2/08/22. Final areas are subject to finalisation of documentation, finalisation of construction and final strata survey.

centricbusinesspark.com.au